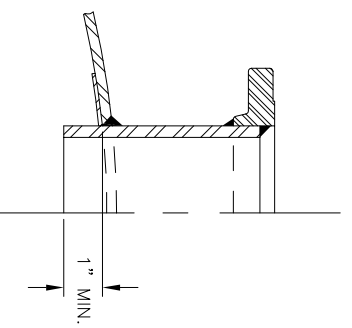
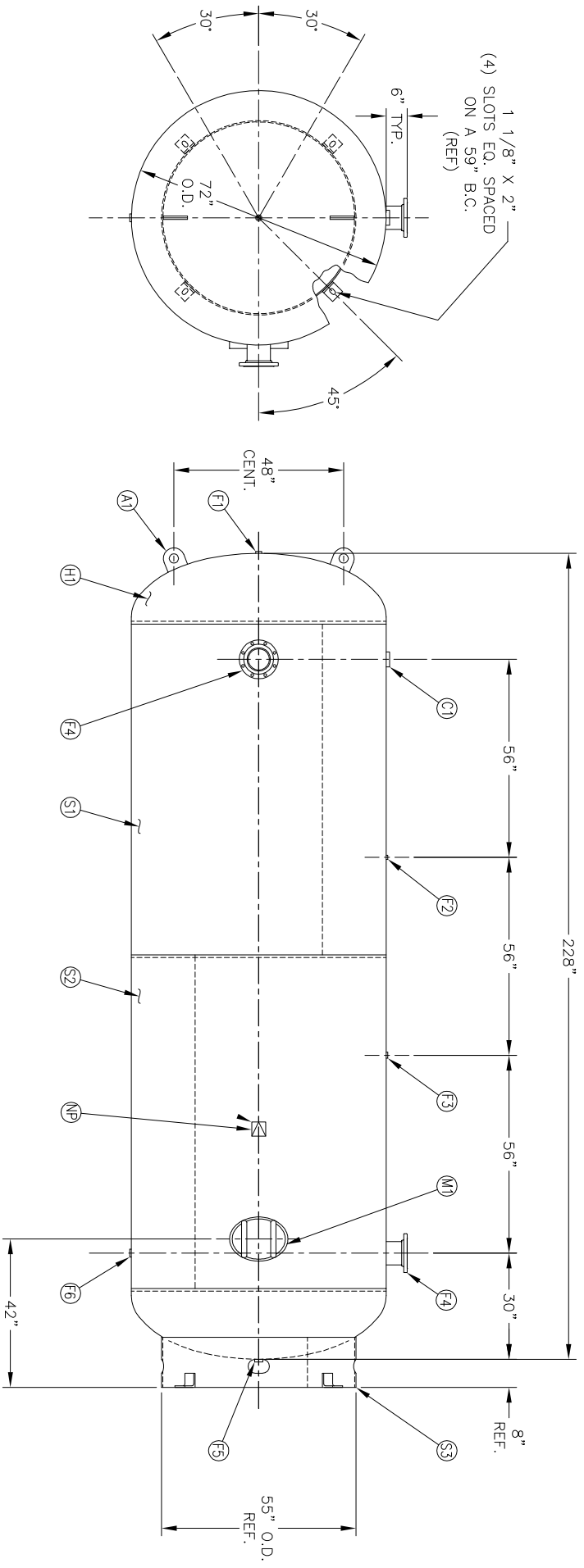


MANWAY DETAIL



NOZZLE DETAIL

NO. QTY.	DESCRIPTION	SPEC	SUB-DWG.
S1 1			
S2 1			
H1 2			
C1 1	3"-NPT 3000# HALF COUPLING	SA-105	
F1 1	1"-NPT 1500# FLAT FLANGE	SA-181-70	
F2 1	1/4"-NPT 1500# FLAT FLANGE	SA-181-70	
F3 1	1"-NPT 1500# RADIAL FLANGE	SA-181-70	
F4 2	6"-150# ANSI RF SO. FLANGE	SA-105	
F4 2	6" SCH.40 PIPE X 8 1/8" LONG	SA-106-B	
F4 2	.134 X 8 5/8" O.D. X 6 5/8" I.D. BACKING RING	C1008	
F5 1	1 1/4"-NPT 1500# FLAT FLANGE	SA-181-70	
F6 1	1 1/4"-NPT 1500# RADIAL FLANGE	SA-181-70	
M1 1	12" X 16" X 3/4" X 4" 300# MANWAY	SA-675-70	
A1 2	1" X 6" X 6" STANDARD LIFT LUG	A86004	
S3 1	STANDARD 8" SKIRT & CLIP ASSY. FOR 72" DIA. TANK	A86003	
NP 1	ASME DATA PLATE	C1010	



(4) 1 1/8" X 2" SLOTS EQ. SPACED ON A 59" B.C. (REF)

SW/ DATE	BY	REVISION	APP	XREF	REV.	NOTES	SPECIFICATIONS
							O.D. 72 LGH. 228 MAMP 137 PSI @ 450 F GAL. 3800 SA WT. CUFT. CODE ASME SECT. VIII, DIV. 1 PER DATE OF DWG/LAST REV STD. TOLERANCES (UNLESS OTHERWISE NOTED): M-2461

**MANCHESTER TANK**

72" X 228" VERTICAL STANDARD AIR RECEIVER

SCALE: NONE

DRAWING NO. 302456

DATE

DATE

DATE

DATE