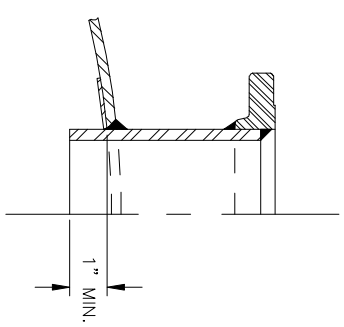
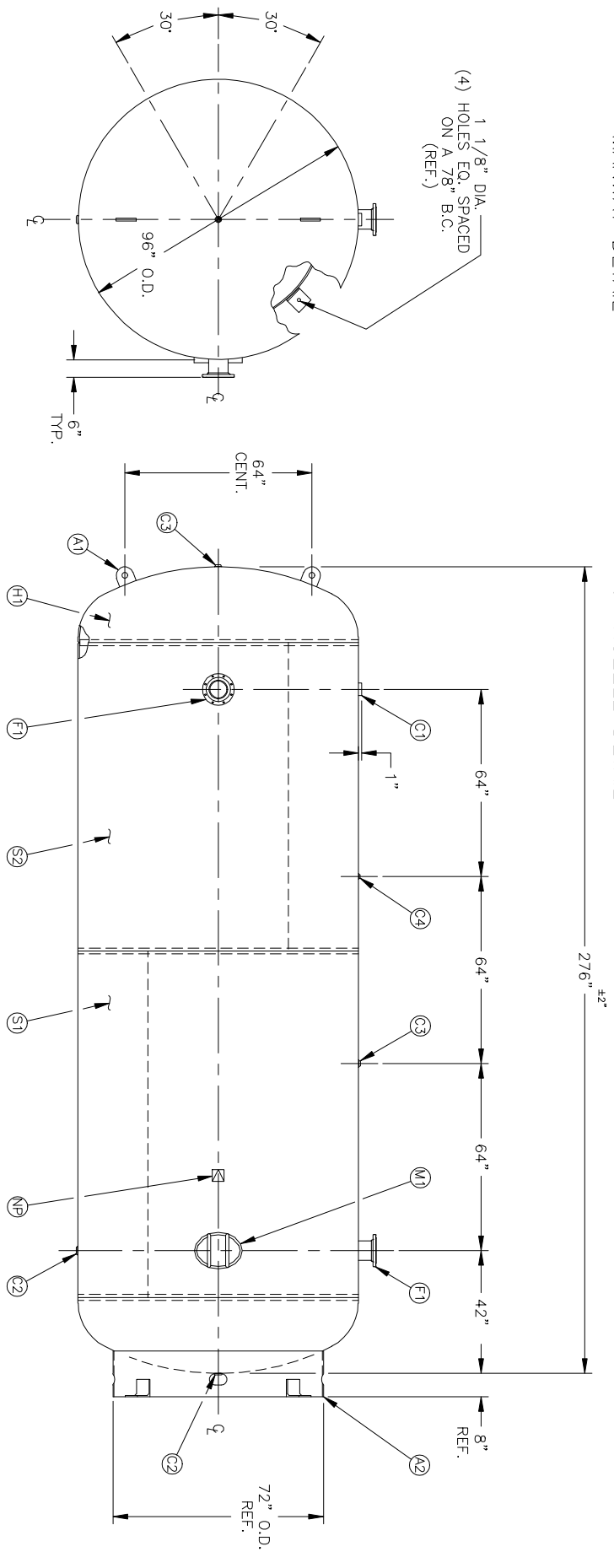


MANWAY DETAIL



6" NOZZLE DETAIL

NO. QTY.	DESCRIPTION	SPEC	SUB-DWG.
S1 1			
S2 1			
H1 2			
C1 1	3"-NPT 3000# HALF COUPLING	SA-105	
C2 2	1 1/4"-NPT 3000# HALF COUPLING	SA-105	
C3 2	1"-NPT 3000# FULL COUPLING	SA-105	
C4 1	1/4"-NPT 3000# FULL COUPLING	SA-105	
F1 2	6"-150# ANSI RF.SO. FLANGE	SA-105	
F1 2	6" SCH.80 PIPE X 7 3/4" LONG	SA-106-B	
F1 2	134 X 8 5/8" O.D. X 6 5/8" I.D. BACKING RING	C1008	
M1 1	12" X 16" X 3/4" X 4" 300# MANWAY	SA-106-C	
A1 2	1" X 6" X 6" STANDARD LIFT LUG		
A2 1	STANDARD 8" SKIRT & CLIP ASSY. FOR 96" DIA.		
A3 3	3/16" X 2" X 297 7/8" BACKING RING	SA-36	
NP 1	ASME DATA PLATE	C1010	



SYN DATE	BY	REVISION	APP	NOTES	O.D. 96 LGTH. 276 MANWP 137 PSI @ 450 F. GAL. 8000 WTD. 14000 CORR ALW --- SH --- HD CODE ASME SECT.IV, DIV.1 PER DATE OF DWG/LAST REV WELD DETAILS: M-1932 STD. TOLERANCES (UNLESS OTHERWISE NOTED): M-2461	MANCHESTER TANK 8000 GALLON STD. VERT. AIR REC.	DRAWN BY DATE SCALE: NONE DRAWING NO. 304807
----------	----	----------	-----	-------	--	--	---