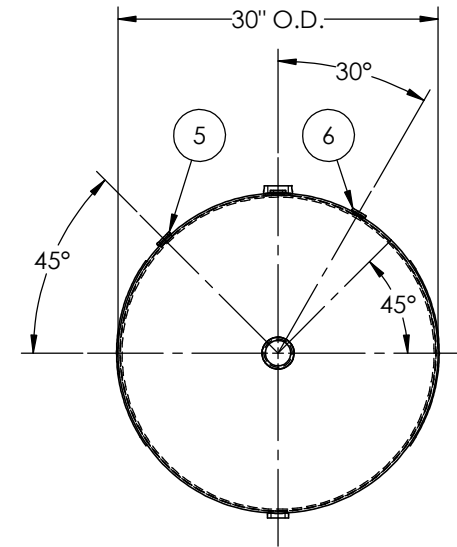
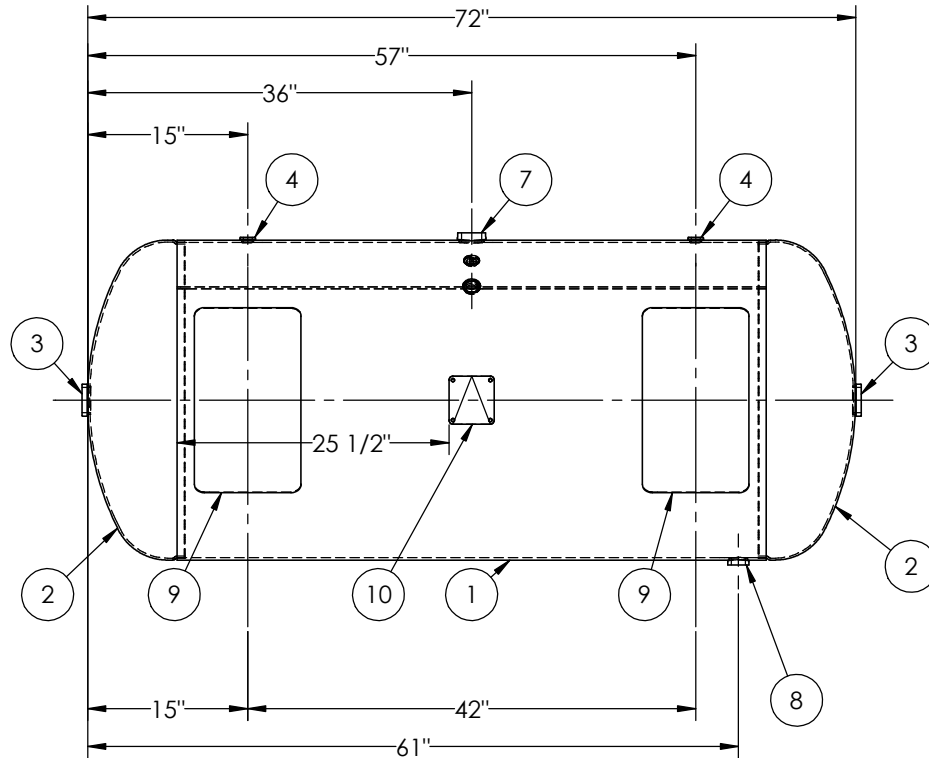
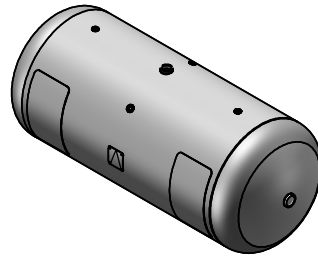


ITEM NO.	PART NO.	DESCRIPTION	QTY.
1	302643-SL	SHELL LAYOUT FOR 30" TANK	1
2	H32041	.186 MIN. 30" O.D. 2:1 ELLIP. JOG. HEAD	2
3	F30316	2"-NPT FLAT FLANGE O-RING	2
4	F10250	1/2"-NPT FLAT FLANGE	2
5	F31840	3/4"-NPT FLAT FLANGE	1
6	F33310	1/8"-NPT FLAT FLANGE	1
7	F30317	1 1/2"-NPT RADIAL FLANGE O-RING	1
8	F30263	1"-NPT RADIAL FLANGE	1
9	A99437	10GA PAD	4
10	A20910	ASME DATA PLATE	1
11	A99139	LEG ASY	2



SHEET 1 OF 2

NOTES:

SPECIFICATIONS

O.D. 30 LGTH. 72
 WT. 768 LBS.
 S.A. 50 SQ.FT.
 GAL. 200 CU.FT.26.5 CRN: F0628.1C
 CODE: ASME Section VIII, Div.1, LATEST EDITION
 STD. TOLERANCES: M-2461 (UNLESS OTHERWISE NOTED)

MAWP 200 PSI @ 400°F

EXMT UG-20(f) CORR ALW 0 SH 0 HD
 WELD DETAILS: M-1932

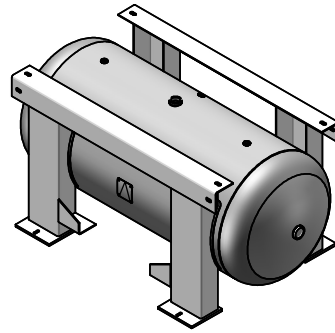


HORIZONTAL AIR RECEIVER

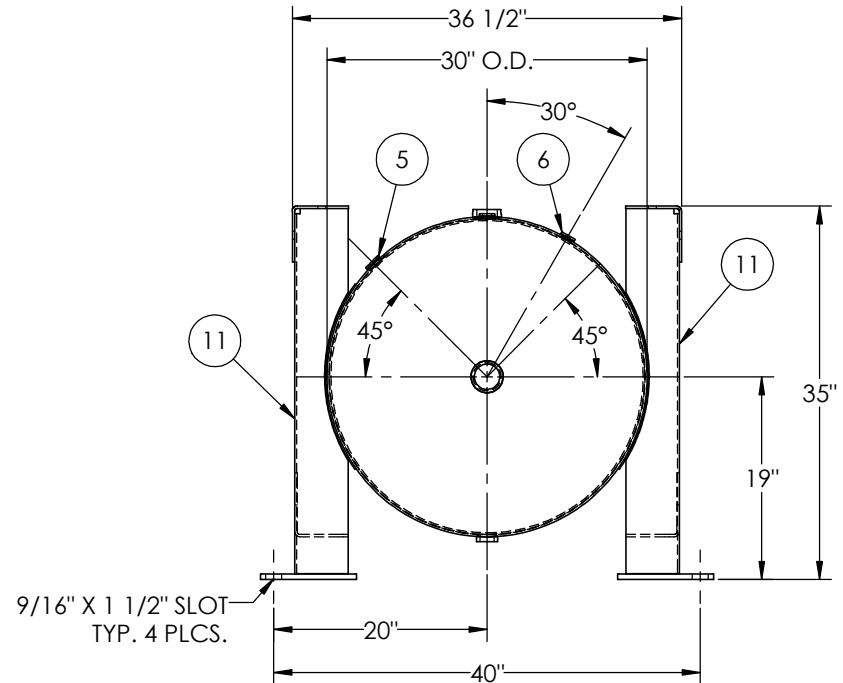
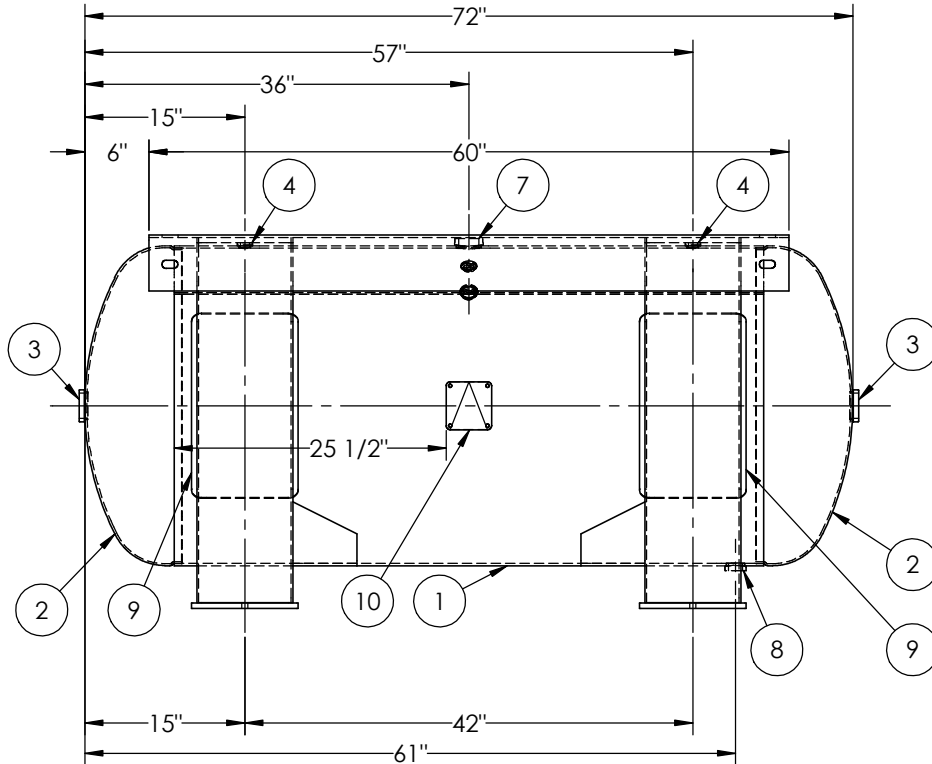
REV.	BY	REVISIONS DESCRIPTION	DATE	APP.
A	KAT			JC
B	BAK			JC
C	DS			DS
D	RK			MK

DRAWN BY:	DATE:
APPR. BY:	DATE:
SCALE: NONE	DRWG NO. 302643

RELEASED FOR PRODUCTION
 Q.C. _____ DATE _____



ITEM NO.	PART NO.	DESCRIPTION	QTY.
1	302643-SL	SHELL LAYOUT FOR 30" TANK	1
2	H32041	.186 MIN. 30" O.D. 2:1 ELLIP. JOG. HEAD	2
3	F30316	2"-NPT FLAT FLANGE O-RING	2
4	F10250	1/2"-NPT FLAT FLANGE	2
5	F31840	3/4"-NPT FLAT FLANGE	1
6	F33310	1/8"-NPT FLAT FLANGE	1
7	F30317	1 1/2"-NPT RADIAL FLANGE O-RING	1
8	F30263	1"-NPT RADIAL FLANGE	1
9	A99437	10GA PAD	4
10	A20910	ASME DATA PLATE	1
11	A99139	LEG ASY	2



SHEET 2 OF 2

NOTES:


RELEASED FOR PRODUCTION
Q.C. _____ DATE _____

REV.		BY	DESCRIPTION	DATE	APP.
A	KAT				JC
B	BAK				JC
C	DS				DS
D	RK				MK

SPECIFICATIONS

O.D. 30 LGTH. 72 MAWP 200 PSI @ 400°F
 WT. 768 LBS.
 S.A. 50 SQ.FT.
 GAL. 200 CU.FT.26.5 CRN: F0628.1C
 CODE: ASME Section VIII, Div.1, LATEST EDITION
 STD. TOLERANCES: M-2461 (UNLESS OTHERWISE NOTED)

W
 EXMT UG-20(f) CORR ALW 0 SH 0 HD
 WELD DETAILS: M-1932



HORIZONTAL AIR RECEIVER

DRAWN BY:	DATE:
APPR. BY:	DATE:
SCALE: NONE	DRWG NO. 302643